



cogta

Department:
Cooperative Governance and Traditional Affairs
PROVINCE OF KWAZULU-NATAL



PRESENTATION ON KZN COGTA PERIODIC EVALUATIONS

DPME: EVALUATION SEMINAR

TOGETHER WE HAVE MADE KZN A BETTER PROVINCE TO LIVE IN, TOGETHER WE WILL MOVE SOUTH AFRICA FORWARD



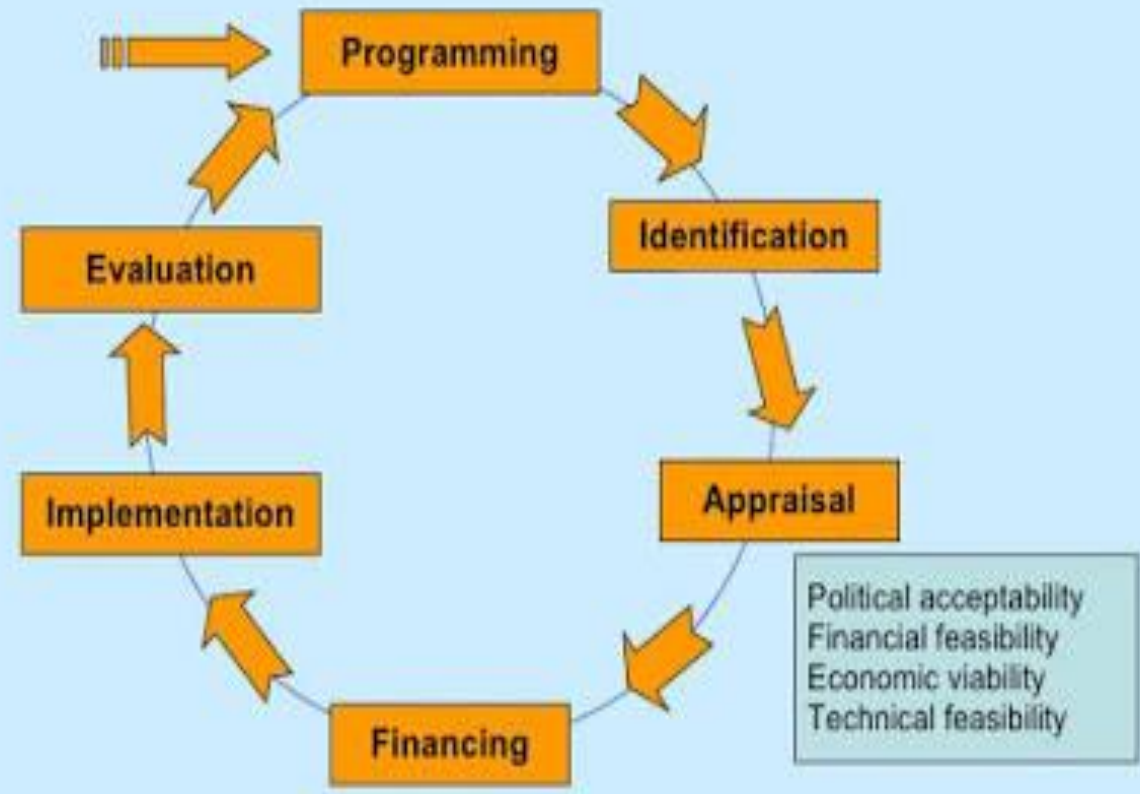
cogta

Department:
Cooperative Governance and Traditional Affairs
PROVINCE OF KWAZULU-NATAL

WHY EVALUATE

freshspectrum.com

The Project Cycle



I can't tell you
how valuable
your program is

I can

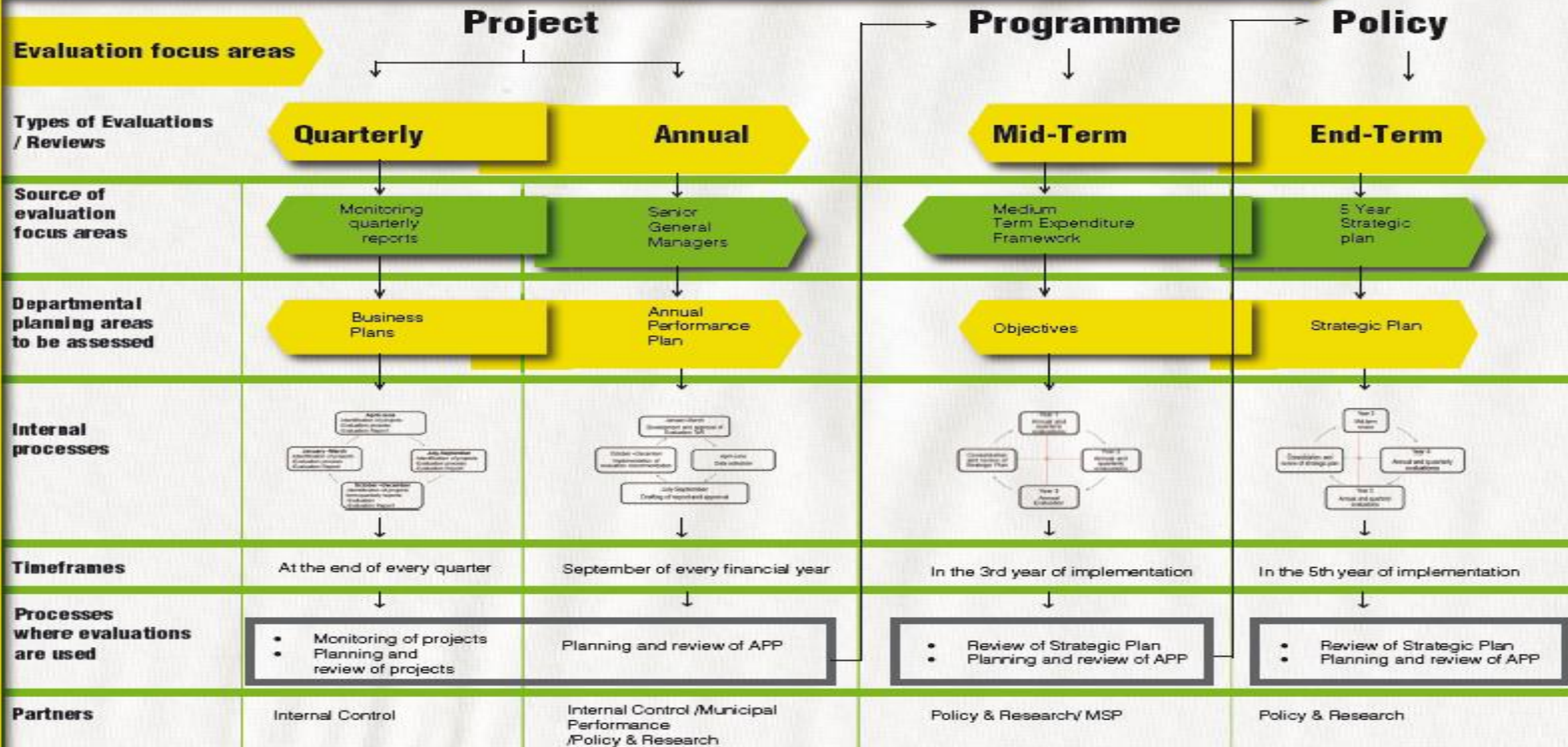


Researcher



Evaluator

EVALUATION CYCLE





cogta

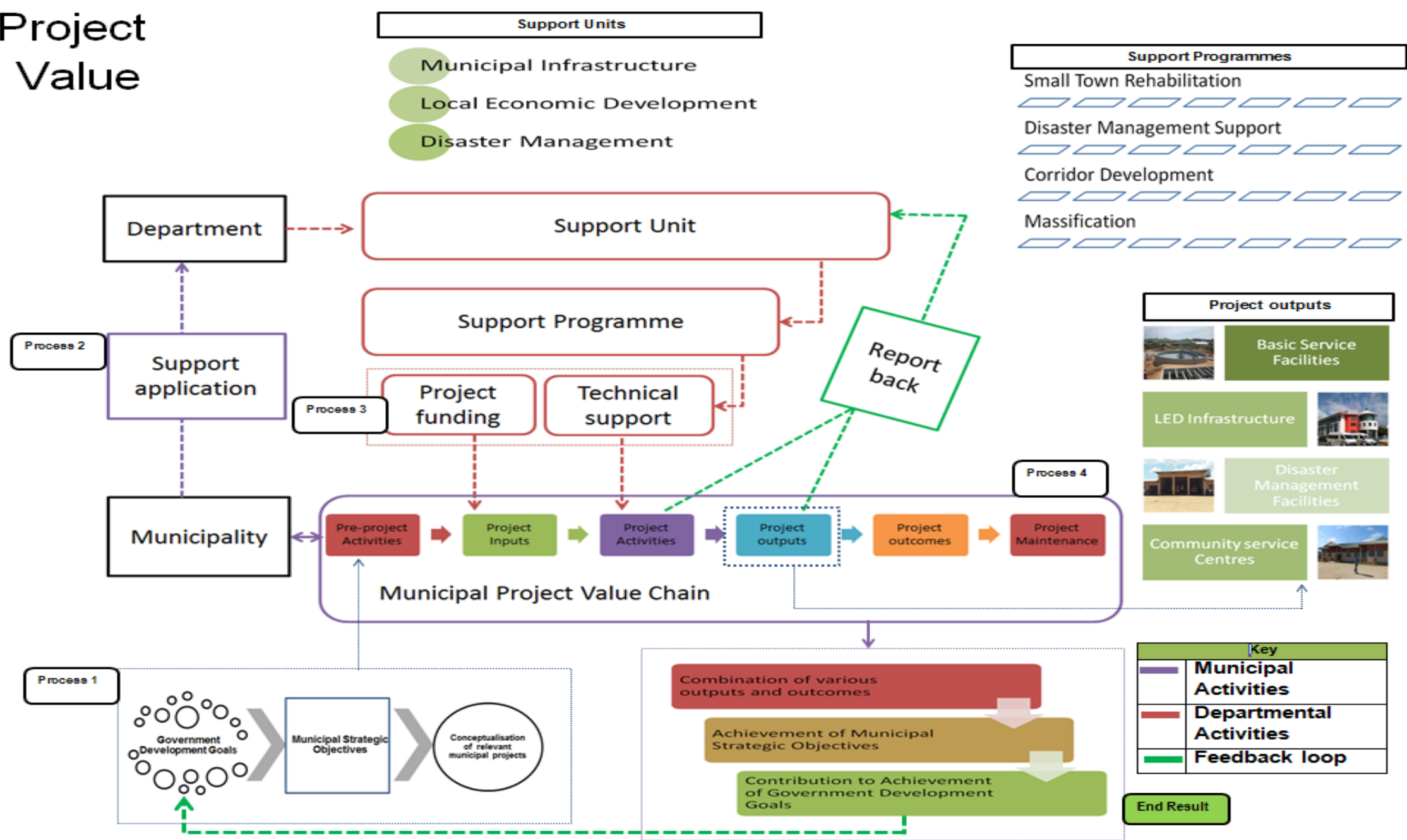
Department:
Cooperative Governance and Traditional Affairs
PROVINCE OF KWAZULU-NATAL

QUARTERLY EVALUATIONS

BACK TO BASICS: SERVING OUR COMMUNITIES BETTER



Capital Project Support Value Chain

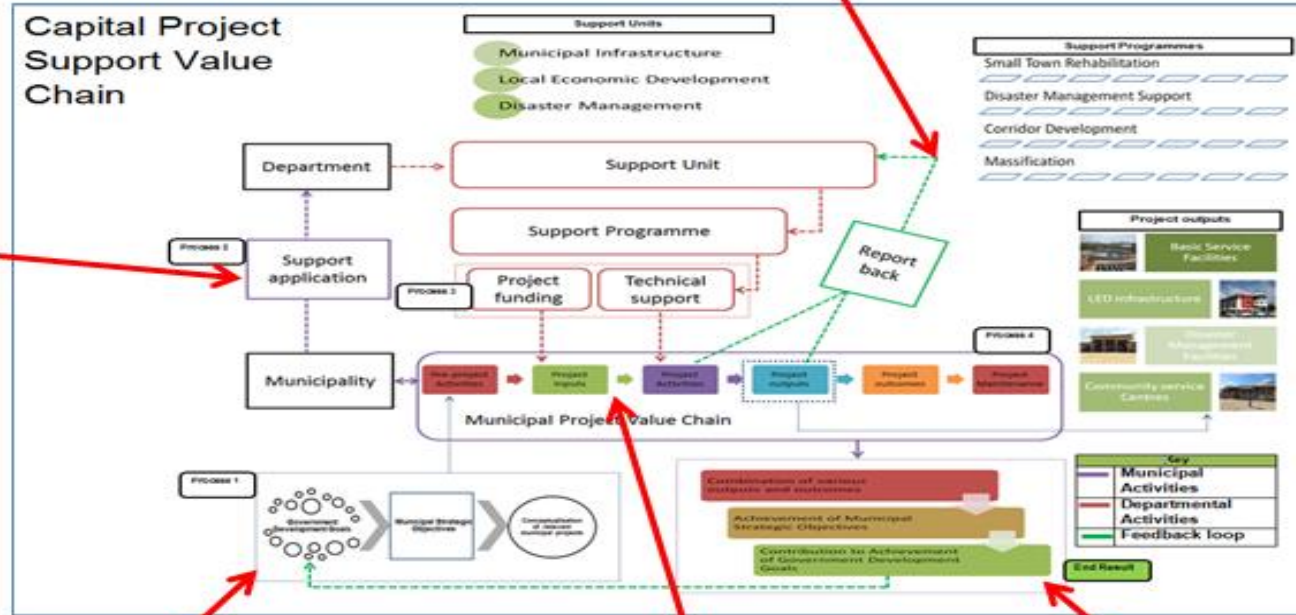


4. General challenges in this area related to projects not being implemented in time and scope.

All projects had project steering committees, a question is raised as to how the constituency of these structures ensured smooth implementation of these projects and ensured that implementation bottlenecks were addressed.



2. There were different perspectives of the support application, with the Department feeling that the process is efficient and the municipalities feeling that the process does not respond to project needs.



1. If feasibility studies are conducted and subsequent designs are developed, why are projects implemented out of budget and out of scope? This is asked as a result of the fact that projects experienced deviated deliverable costs.

3. A majority of projects experienced deviated costs per deliverables. The majority of projects which experienced expenditure challenges were projects were found under Massification Support programme.

5. The lower than expected functional facilities and end user percentages indicate that deliverables were not produced on time due resource and implementation challenges.



VALUE FOR MONEY

6. While the majority of the projects were economical, efficiency challenges such as time and scope management affected the deliverables leading to the noted results.

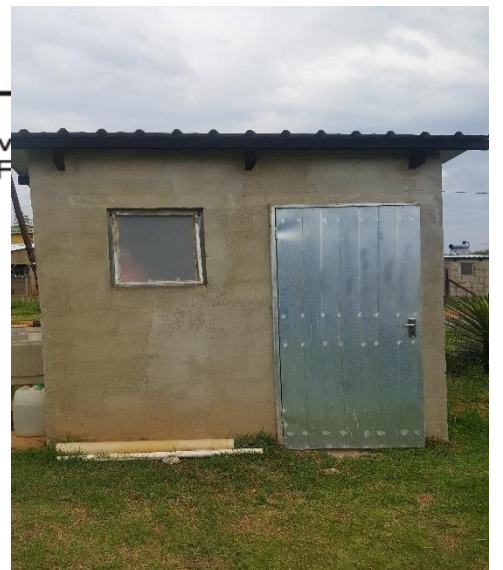


WARD 2 GALLERY

Evaluation of ablution facilities project in NDZ Municipality



COGTA Field Workers talking to project beneficiaries on site



EXTERIOR :ABLUTION FACILITIES FUNDED BY COGTA



INTERIOR :ABLUTION FACILITIES FUNDED BY COGTA



OUTSIDE SINK AND ITS PLUMBING



ABLUTION FACILITY BENEFITING COMMUNITIES



LEAKING TOILETS IN WARD 2



COMMUNITY TRYING MANAGE LEAKING TOILETS IN WARD 2



INCORRECTLY INSTALLED TOILET SEAT WHICH LEADS TO WATER LEAKS



POOR PLUMBING RESULTING TO WATER LEAKS



CRACKED CEMENT SINK WHICH WILL EVENTUALLY FALL



TAP STARTING TO COME OFF DUE TO POOR INSTALLATION

WARD 3 GALLERY



COGTA FIELD WORKERS IN WARD 3



COGTA FIELD WORKERS JOINED BY THE MAYOR IN WARD 3



ABLUTION FACILITY FLOODING WHEN IN RAIN



ABLUTION FACILITY FLUSHING HANDLE NOT COMING UP RESULTING TO WASTE OF WATER



DRAINAGE SYSTEM DAMAGED SINCE IT IS INCORRECTLY INSTALLED ON THE STREET



POOR SINK PIPING UNDER THE SINK WHICH RESULTS TO BLOCKAGES



BROKEN DRAINAGE SYSTEM



TOILET TOP PART WHICH DOES NOT OPEN WHEN THE USERS DO NOT HAVE WATER



FACILITIES' ROOF AT RISK TO BE BLOWN BY WIND



TOILET PAPER HOLDER NOT OPENING THEREFORE CAN'T BE USED



cogta

Department:
Cooperative Governance and Traditional Affairs
PROVINCE OF KWAZULU-NATAL

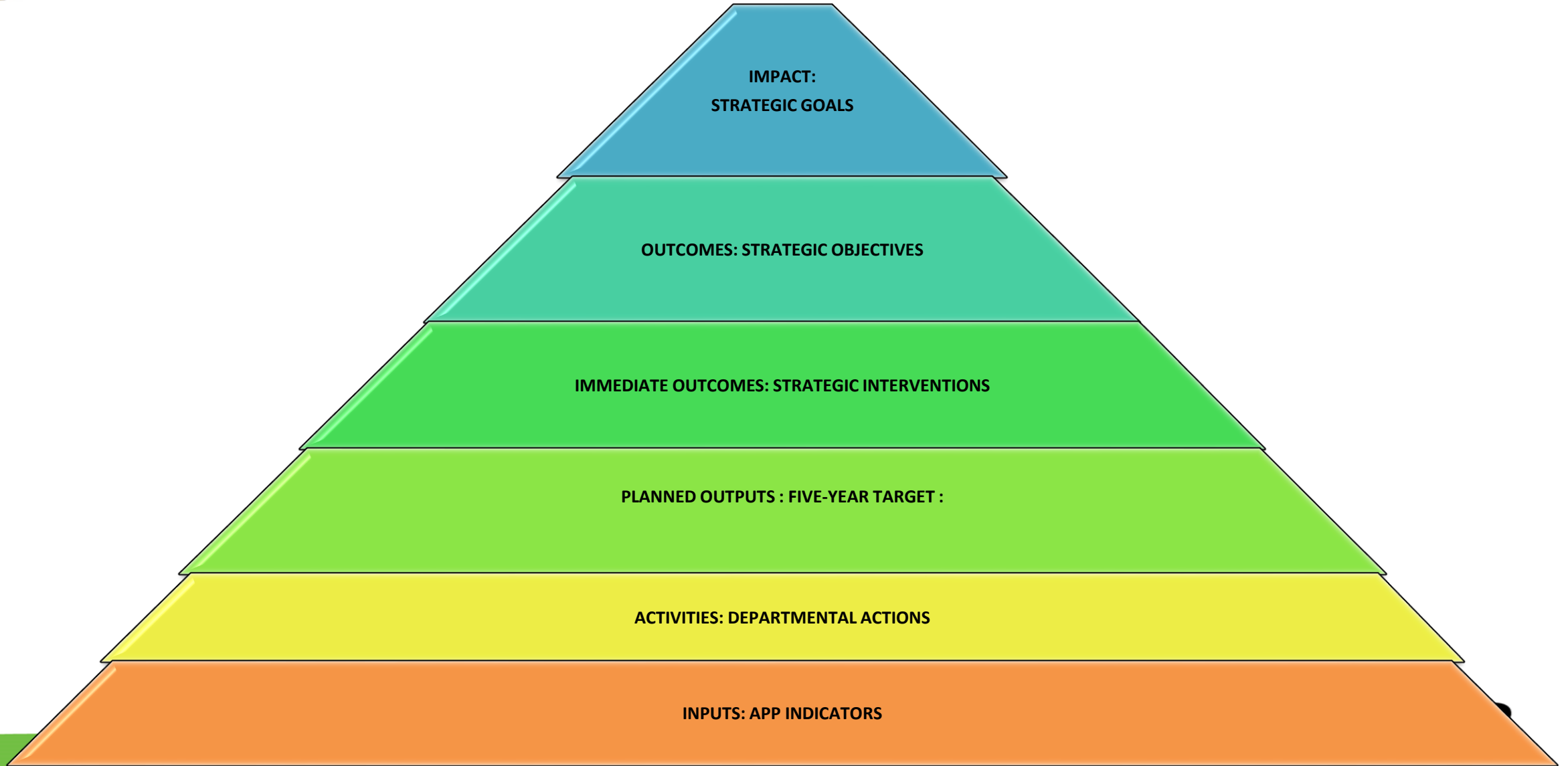
MIDTERM REVIEW

BACK TO BASICS: SERVING OUR COMMUNITIES BETTER

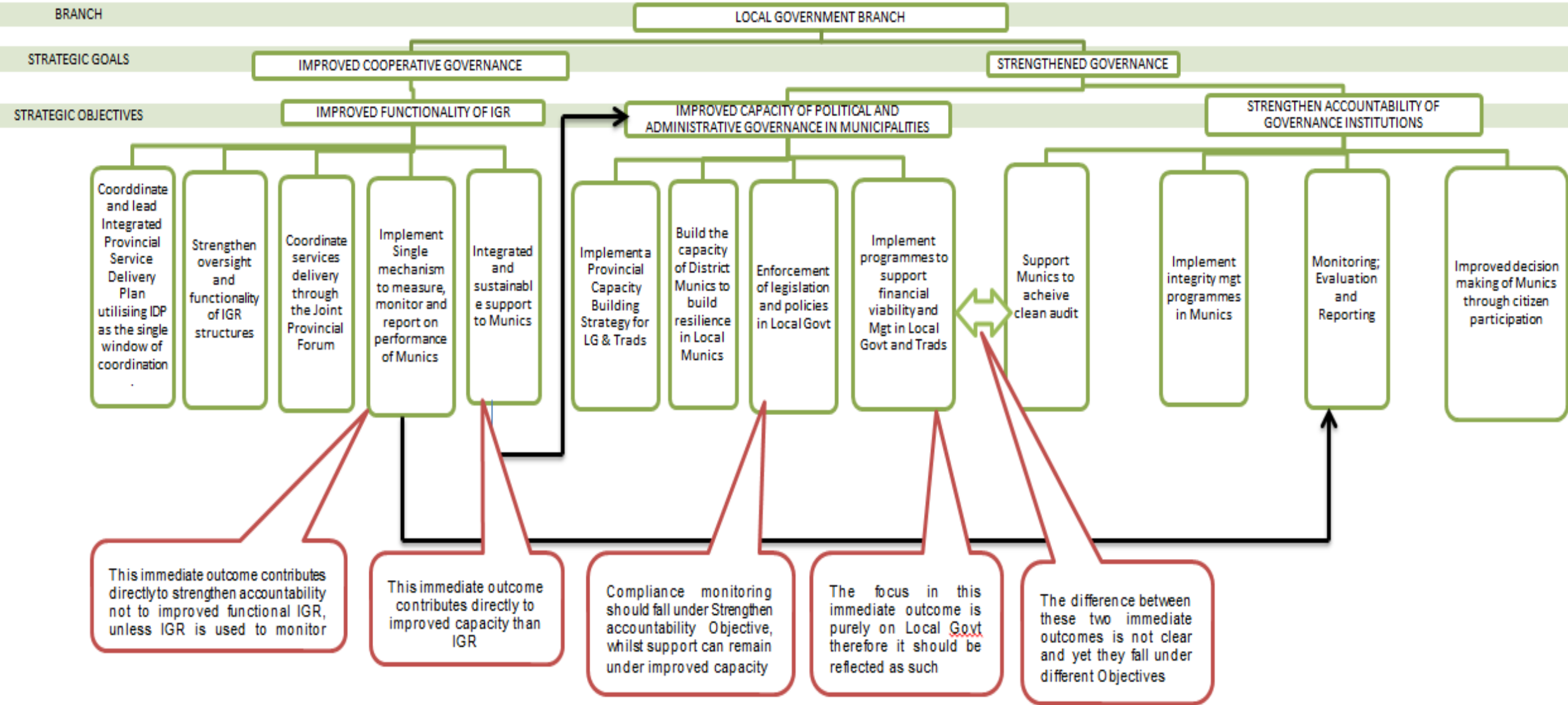




MIDTERM REVIEW



PROGRAMME 2: ASSESSMENT OF ALIGNMENT LOGIC MODEL



To what extent IDPS influence sector APPs and are the APPs talking to Ward Plans? Muncis raised that there is too much focus on the quality of IDPs and less on implementation of IDPs

The Strat Plan listed elements of functional IGR structures these include Co-operative decision making; Co-ordinate and align budget priorities and policies; Co-ordination of service delivery issues. The Evaluation of Technical MuniMEC calls for refocusing of IGR structures including Agenda Setting and revival of District Structures to eliminate duplication and utilisation of IGR to address bottlenecks.

Improved Co-operative Governance

The ETR found that there is an outcry in Muncis regarding duplication of reporting not only from the Sector Departments but from COGTA itself.

The B2B Evaluation report found that the programme has lost focus from a service delivery programme to a monitoring tool. The ETR found that Muncis do not know what support to expect from the Province; COGTA is not coordinating sector support.

Improved Functionality of Inter-governmental Relations

1. Co-ordinate and lead Integrated Provincial Service Delivery Plan utilising the IDP as the single window of coordination

2. Strengthening oversight and functionality of IGR structures (such as Minmec, MuniMEC, PCF, Municipal IGR fora)

3. Co-ordinate service delivery through the Joint Provincial Forum

4. Implement single mechanism to measure, monitor and report on performance of municipalities

5. Integrated and sustainable support to municipalities

1 Integrated Provincial Service Delivery Plan implemented

70% public sector capital expenditure within KZN spent in accordance with the PGDS identified/aligned projects

75% public sector spent in accordance to the municipal IDP

All IGR structures are fully functional in accordance with the IGR Framework

1 joint provincial service delivery forum supported

All municipalities complying with the single reporting system

Electronic system reflecting current status of functionality of municipalities

All municipalities are categorised as functional

BACK TO BASICS: SERVING OUR COMMUNITIES



cogta

Department:
Cooperative Governance and Traditional Affairs
PROVINCE OF KWAZULU-NATAL



END

THANK YOU

TOGETHER WE HAVE MADE KZN A BETTER PROVINCE TO LIVE IN, TOGETHER WE WILL MOVE SOUTH AFRICA FORWARD